

ORDINANCE NO. 2025-6

**AN ORDINANCE
APPROVING THE ADJUSTMENT OF THE BOUNDARY LINES
SEPARATING THE VILLAGE OF WAITE HILL AND THE
CITY OF WILLOUGHBY BY MUTUAL CONSENT AND
DIRECTING THE PROCESSING OF THE BOUNDARY
ADJUSTMENT.**

WHEREAS, the Village of Waite Hill (“Waite Hill” or “Village”) and the City of Willoughby (“Willoughby”) are municipal corporations (together “municipalities”) located in Lake County, Ohio that have common boundary lines separating them; and

WHEREAS, Waite Hill and Willoughby have mutually consented and agreed to certain changes in the boundary lines separating them; and

WHEREAS, Waite Hill and Willoughby have caused to be prepared plats of corporation line adjustments for which the boundary adjustments are being made that are depicted in the Plat for Corporate Line Adjustment “Area A” and Plat for Corporate Line Adjustment “Area B” attached to this Ordinance; and

WHEREAS, the municipalities have agreed to transfer certain territory from Waite Hill to Willoughby pursuant to Ohio Revised Code Section 709.37 as depicted on the aforementioned Plats (appended hereto) and that no adjustment of funds, unpaid taxes, claims, indebtedness, or other fiscal matters be made between the municipalities; and

WHEREAS, the territory being transferred is not inhabited by any voters; and

WHEREAS, Council has reviewed the proposed municipal boundary adjustment and attached exhibits and agrees with and consents to an adjustment of the boundary lines separating Waite Hill and the Willoughby as shown thereon; and

WHEREAS, Council finds that it is in the best interest of Waite Hill, the geographic integrity of the Village and the region, and the health, safety and welfare of its residents to adjust its boundaries with the City of Willoughby.

**NOW, THEREFORE, BE IT ORDAINED BY THE COUNCIL VILLAGE OF
WAITE HILL, LAKE COUNTY STATE OF OHIO:**

SECTION 1: That this Council hereby consents and agrees to the adjustment of the adjoining boundaries of the Village of Waite Hill and the City of Willoughby depicted in attached Plat for Corporation Line Adjustment “Area A” and Plat for Corporation Line Adjustment “Area B” in the manner provided by law. The Village administration may take such further actions as may be required by law to enact the boundary adjustment provided for in this Ordinance.

SECTION 2: That this Council finds the change in municipal boundaries and transfer of property from Waite Hill to Willoughby does not involve the transfer of territory inhabited by more than five voters from one municipality to the other or from each municipality to the other and that no adjustment of funds, unpaid taxes, claims, indebtedness, or other fiscal matters should be made between the municipalities.

SECTION 3: Waite Hill and Willoughby have agreed and the Village of Waite Hill requests that the Commissioners make no adjustment of funds, unpaid taxes, claims, indebtedness, or other fiscal matters between the Village of Waite Hill and the City of Willoughby and agree that none are proper.

SECTION 4: The Village Engineer is hereby authorized and directed to do all things necessary to accomplish such boundary adjustment as provided by law, including filing certified ordinances of the municipalities with the Lake County Board of County Commissioners, including appearing and speaking on behalf of Waite Hill in support and defense of the boundary adjustment, and is further authorized and directed, along with the Clerk of Council to file and record all necessary documents and papers, including filing the transcripts of the ordinances, agreements and resolutions certified by the Board of County Commissioners in the office of the secretary of state and recording them with the Lake County, Ohio recorder and doing all other things necessary to accomplish the such boundary adjustment.

SECTION 5: That the Clerk of Council is authorized and directed to certify a copy of this Ordinance for the Lake County Board of County Commissioners, which shall, upon filing with the Board, constitute a request by the Village of Waite Hill for the Commissioners to proceed by resolution to approve such change of boundary by mutual consent as required by law.

SECTION 6: That this Ordinance shall take effect and be in force from and after the earliest period allowed by law.

PASSED: _____, 2025

Council President

Submitted to the Mayor
for his approval on this

_____ day of _____, 2025

Approved by the Mayor

ATTEST:

_____, 2025

Clerk-Treasurer

Mayor

**PLAT OF CORPORATION LINE ADJUSTMENT BETWEEN
THE VILLAGE OF WAITE HILL, LAKE COUNTY, OHIO AND THE
CITY OF WILLOUGHBY, LAKE COUNTY, OHIO
BEING PARTS OF ORIGINAL LOT NO. 3, TRACT 9 AND PARTS OF
ORIGINAL LOTS NO. 4 AND NO. 5, TRACT 13
IN THE NINTH TOWNSHIP OF THE TENTH RANGE OF THE
CONNECTICUT WESTERN RESERVE NOVEMBER, 2024**



SCALE IN FEET
0 120 240

APPROVED BY THE BOARD OF COUNTY COMMISSIONERS LAKE COUNTY, OHIO IN RESOLUTION NO. _____ DATED _____ ONLY ADOPTED BY THE BOARD ON _____ FOLLOWING ITS RECEIPT OF THE CERTIFIED ORDINANCES OF THE VILLAGE OF WAITE HILL AND THE CITY OF WILLOUGHBY AGREEING TO A CHANGE IN THE BOUNDARY LINE SEPARATING THE MUNICIPALITIES.

JENNIFER BELL, CLERK DATE _____

APPROVED BY THE VILLAGE OF WAITE HILL, OHIO BY ORD. NO. _____ ONLY ADOPTED BY VILLAGE COUNCIL ON _____ WITH THE AGREEMENT OF THE CITY OF WILLOUGHBY.

ROBERT LAPS, CLERK-TREASURER RYAN COX, MAYOR

APPROVED BY THE LAW DIRECTOR OF THE VILLAGE OF WAITE HILL, OHIO

STEPHEN BYRON, LAW DIRECTOR DATE _____

APPROVED BY THE CITY OF WILLOUGHBY, OHIO BY ORD. NO. _____ ONLY ADOPTED BY CITY COUNCIL ON _____ WITH THE AGREEMENT OF THE VILLAGE OF WAITE HILL.

ALISA NOVAK, CLERK OF COUNCIL ROBERT A. RALA, MAYOR

APPROVED BY THE LAW DIRECTOR OF THE CITY OF WILLOUGHBY, OHIO

MICHAEL C. LUCAS, LAW DIRECTOR DATE _____

SURVEYOR'S CERTIFICATION

THIS IS TO CERTIFY THAT AT THE REQUEST OF THE VILLAGE OF WAITE HILL I HAVE PLATTED THE LAND SHOWN HEREON FROM EXISTING RECORDS AND CONTAINING APPROXIMATELY 9.704 ACRES OF LAND.

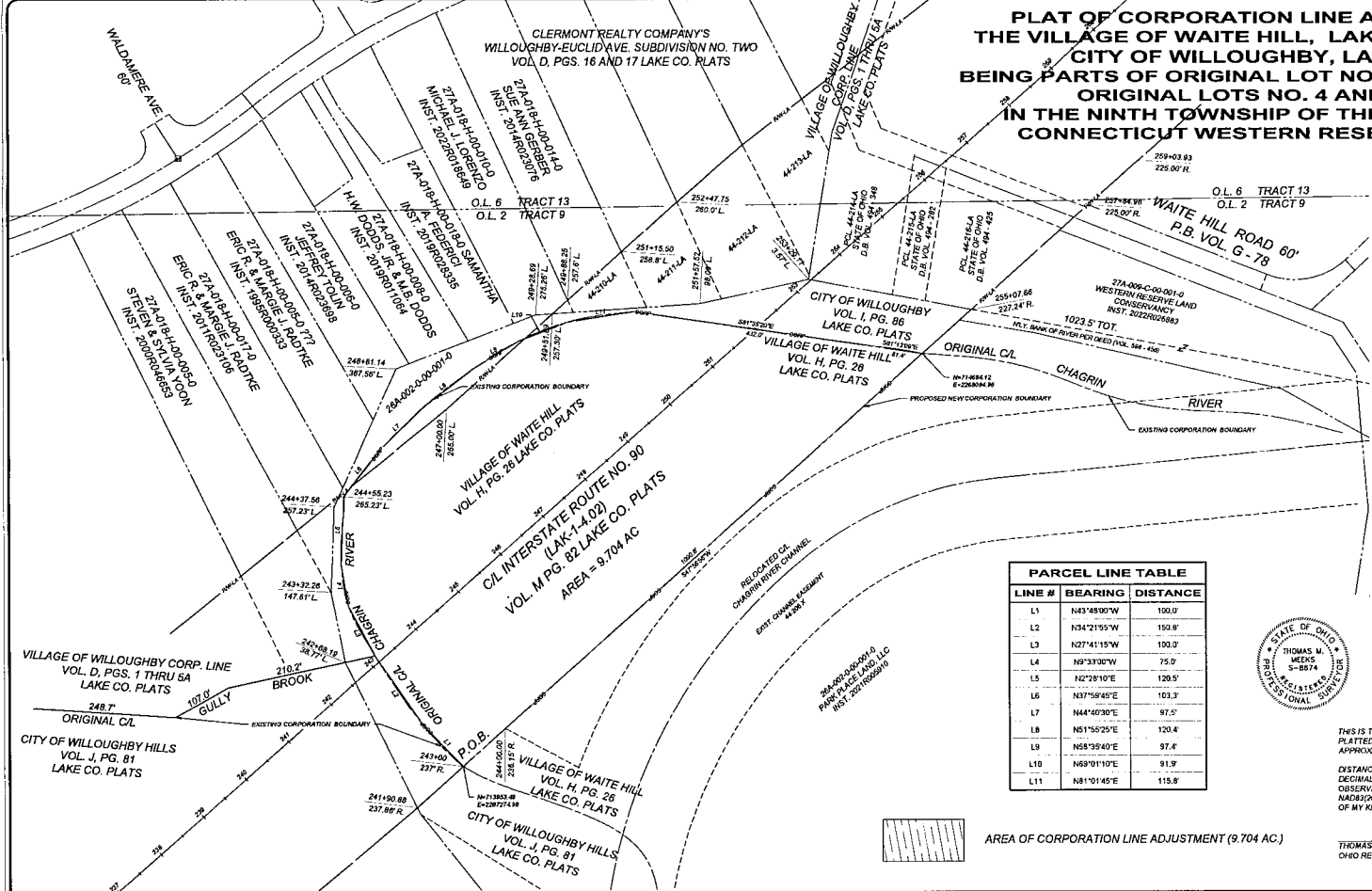
DISTANCES SHOWN HEREON ARE EXPRESSED IN UNITS OF U.S. SURVEY FEET AND DECIMAL PARTS THEREOF. BEARINGS SHOWN HEREON ARE BASED UPON GPS OBSERVATIONS UTILIZING THE OHIO STATE PLANE (NORTH ZONE) COORDINATE SYSTEM, NAD83(2011) REFERENCE FRAME, ALL OF WHICH I CERTIFY TO BE CORRECT TO THE BEST OF MY KNOWLEDGE AND BELIEF.

THOMAS M. WEEKS
OHIO REGISTERED SURVEYOR NO. 8874 DATE _____



PARCEL LINE TABLE		
LINE #	BEARING	DISTANCE
L1	N43°48'00"W	100.0'
L2	N34°21'55"W	150.8'
L3	N27°41'15"W	100.0'
L4	N9°33'00"W	75.0'
L5	N27°28'10"E	120.5'
L6	N37°56'45"E	103.3'
L7	N44°40'30"E	97.5'
L8	N51°55'25"E	120.4'
L9	N69°39'40"E	97.4'
L10	N69°10'10"E	91.9'
L11	N81°01'45"E	115.8'

AREA OF CORPORATION LINE ADJUSTMENT (9.704 AC.)



NO.	REVISION	DATE

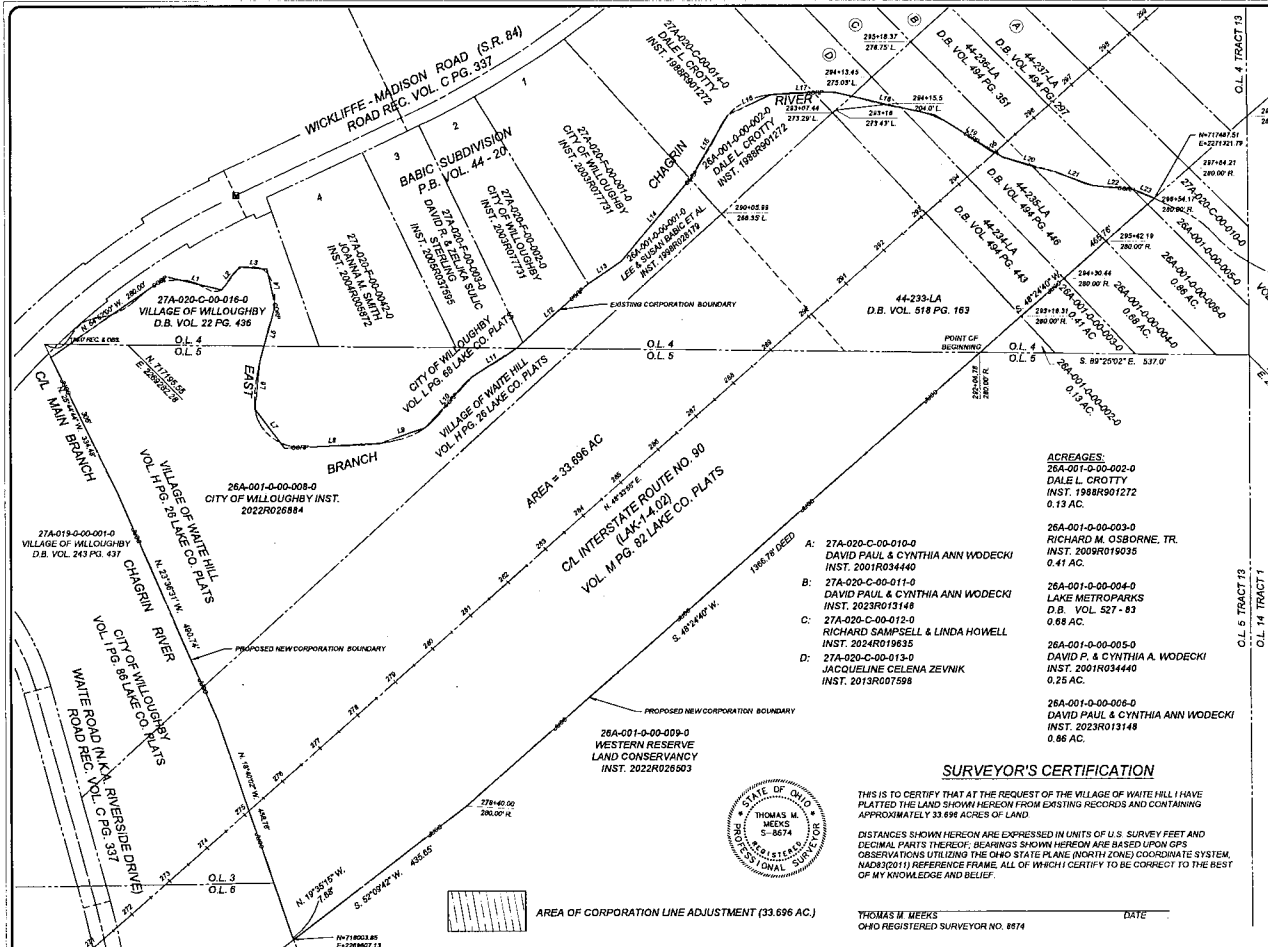
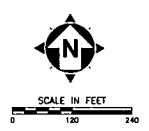
**CITY OF WILLOUGHBY AND VILLAGE OF WAITE HILL
CORPORATION LINE ADJUSTMENT**

DATE: 10/31/24
SCALE: 1" = 100'
DRAWN BY: TMM
CHECKED BY: TMM
APPROVED BY: TMM

**CORPORATION LINE
ADJUSTMENT "AREA A"**

PROJECT NO.	24001803
TOWNSHIP	SURVEY
SHEET NAME	01
SHEET	1
OF	1

PLAT OF CORPORATION LINE ADJUSTMENT BETWEEN THE VILLAGE OF WAITE HILL, LAKE COUNTY, OHIO AND THE CITY OF WILLOUGHBY, LAKE COUNTY, OHIO BEING PARTS OF ORIGINAL LOT NO. 3, TRACT 9 AND PARTS OF ORIGINAL LOTS NO. 4 AND NO. 5, TRACT 13 IN THE NINTH TOWNSHIP OF THE TENTH RANGE OF THE CONNECTICUT WESTERN RESERVE



- ACREAGES:**
- 26A-001-0-00-002-0 DAVID PAUL & CYNTHIA ANN WODECKI INST. 2001R034440 0.13 AC.
 - 26A-001-0-00-003-0 RICHARD M. OSBORNE, TR. INST. 2000R019035 0.41 AC.
 - 26A-001-0-00-004-0 LAKE METROPARKS D.B. VOL. 527 - 83 0.88 AC.
 - 26A-001-0-00-005-0 DAVID P. & CYNTHIA A. WODECKI INST. 2001R034440 0.25 AC.
 - 26A-001-0-00-006-0 DAVID PAUL & CYNTHIA ANN WODECKI INST. 2023R013148 0.86 AC.

SURVEYOR'S CERTIFICATION

THIS IS TO CERTIFY THAT AT THE REQUEST OF THE VILLAGE OF WAITE HILL I HAVE PLATTED THE LAND SHOWN HEREON FROM EXISTING RECORDS AND CONTAINING APPROXIMATELY 33.696 ACRES OF LAND.

DISTANCES SHOWN HEREON ARE EXPRESSED IN UNITS OF U.S. SURVEY FEET AND DECIMAL PARTS THEREOF. BEARINGS SHOWN HEREON ARE BASED UPON GPS OBSERVATIONS UTILIZING THE OHIO STATE PLANE (NORTH ZONE) COORDINATE SYSTEM, NAD83(2011) REFERENCE FRAME, ALL OF WHICH I CERTIFY TO BE CORRECT TO THE BEST OF MY KNOWLEDGE AND BELIEF.



THOMAS M. WEEKS DATE _____
OHIO REGISTERED SURVEYOR NO. 8874

PARCEL LINE TABLE		
LINE #	BEARING	DISTANCE
L1	S76°27'00"E	112.5'
L2	N37°11'45"E	58.3'
L3	S85°02'00"E	54.7'
L4	S12°24'00"E	73.5'
L5	S14°56'00"W	116.3'
L6	S6°58'30"W	96.7'
L7	S38°42'30"E	97.8'
L8	N87°13'00"E	190.2'
L9	N70°44'45"E	95.0'
L10	N42°21'40"E	135.5'
L11	N56°51'10"E	107.2'
L12	N47°59'48"E	192.5'
L13	N55°30'18"E	80.0'
L14	N39°40'32"E	214.5'
L15	N30°36'43"E	150.4'
L16	N64°31'40"E	92.8'
L17	N87°36'30"E	123.5'
L18	S77°04'00"E	207.6'
L19	S59°05'00"E	159.7'
L20	S14°07'30"E	100.5'

PARCEL LINE TABLE		
LINE #	BEARING	DISTANCE
L21	S69°50'30"E	86.1'
L22	S63°58'30"E	81.8'
L23	S68°57'00"E	46.2'

APPROVED BY THE BOARD OF COUNTY COMMISSIONERS, LAKE COUNTY, OHIO IN RESOLUTION NO. _____ DATED AND ADOPTED BY THE BOARD ON _____ FOLLOWING ITS RECEIPT OF THE CERTIFIED ORDINANCES OF THE VILLAGE OF WAITE HILL AND THE CITY OF WILLOUGHBY AGREEING TO A CHANGE IN THE BOUNDARY LINE SEPARATING THE MUNICIPALITIES.

JENNIFER BELL, CLERK DATE _____

APPROVED BY THE VILLAGE OF WAITE HILL, OHIO IN ORD. NO. _____ DATED AND ADOPTED BY VILLAGE COUNCIL ON _____ WITH THE AGREEMENT OF THE CITY OF WILLOUGHBY.

ROBERT LAPS, CLERK-TREASURER RYAN CDC, MAYOR

APPROVED BY THE LAW DIRECTOR OF THE VILLAGE OF WAITE HILL, OHIO

STEPHEN WYON, LAW DIRECTOR DATE _____

APPROVED BY THE CITY OF WILLOUGHBY, OHIO IN ORD. NO. _____ DATED AND ADOPTED BY CITY COUNCIL ON _____ WITH THE AGREEMENT OF THE VILLAGE OF WAITE HILL.

ALISA INDIK, CLERK OF COUNCIL ROBERT A. RALA, MAYOR

APPROVED BY THE LAW DIRECTOR OF THE CITY OF WILLOUGHBY, OHIO

MICHAEL C. LUCAS, LAW DIRECTOR DATE _____



NO.	REVISION	DATE

CITY OF WILLOUGHBY AND VILLAGE OF WAITE HILL CORPORATION LINE ADJUSTMENT

DATE: 12/01/24
SCALE: 1" = 150'
DRAWN BY: TMM
CHECKED BY: TPI
APPROVED BY: TMM

CORPORATION LINE ADJUSTMENT "AREA B"

PROJECT NO.	24001803
DISTRICT	
SURVEY	
SHEET NO.	01
SHEET OF	1 1